

Shopping Within an Hour of Yokota

Tokorozawa

Tokorozawa, an easy 45-minute drive north of Yokota, is a great place to spend a day shopping and eating. In addition to the three very nice, large department stores (Daiei, Marui, and Waltz), there are also many small shops. There is a Wendy's, a Shakey's Pizza, two McDonalds and many Japanese eateries. These are all within a short walking distance of each other. In Daiei you will also find a large variety of restaurants. On the top floor there are many restaurants and on the bottom floor you will find buffet restaurants.

If you begin your shopping experience at Daiei you can walk across the street to McDonald's and take a left. You will be on a narrow street with no cars, and lots of shops! Here you will find Shakey's and another McDonald's. There are CD shops, flower shops, vegetable markets, video stores, electronics, pachinko and more. Then you will come out and go past the station and continue on up the main street to Waltz and many other small shops and accessory stores. Cross the street again and head back to Daiei. The name of the street is "Purope". One of the best bakeries for fresh bread, called "Sun Merry" is there.

You can park at any of the three department stores as early as 9:00AM. Parking is free for two hours if you make a purchase of at least ¥2000. After the first two hours, you will be charged ¥100 per thirty minutes.

DIRECTIONS: Turn left out the East Gate. At the first light turn right. Stay on this road until it dead-ends at the Nissan Plant in front of you; turn left. Stay on this road until it ends at Shin Ome Kaido. (You will go through two traffic lights and pass the big Daikuma discount store on the left). At Shin Ome Kaido there will be a Mos Burger on the left and a used car dealer on the right; this is your landmark for the return trip! Turn right on this road. Continue on this road for about 9km. After you go over a long overpass, get into the left lane. Turn left on Fuchu Kaido, the intersection is very large. Stay on Fuchu Kaido for about 2.5km. Keep to the right at the fork in the road, which has a gas station in the center of it. Turn left onto Tokorozawa Kaido. In a few minutes you will see the large department stores and the train station. Continue straight to park in the parking garages.

Lori Belk, Judy Harvey, Viki Paulson-Cody. Directions verified 11/01.

Tachikawa

Although Tachikawa is easiest to get to by train, an easy route is to drive by Showa Memorial Park's main gate then turn left toward Tachikawa Station. Pay parking is available under Takashimaya department store and at Lumine just past the train station's north exit. If you purchase a minimum amount (including meals at the restaurants within the building), parking is free for the first two hours. Takashimaya charges ¥500/hour unless you buy at least ¥5000 of merchandise.

DIRECTIONS: Turn right out the East Gate, then left onto Itsukaichi Kaido. Stay on Itsukaichi Kaido until the light with the Yakiniku "all-you-can-eat" restaurant on the far right corner (the turn for American Village) then turn right. Turn left at the second light (convenience store on the left.) Turn right at the next large intersection and pass Tachikawa Air Base and the main entrance to Showa Memorial Park. At the next large intersection, the sharp left will lead you to Takashimaya while the angled left will lead you to the north exit of Tachikawa Train station. The drive time is 20-40 minutes depending on traffic.

Grand Duo Mall

Inside the Tachikawa train station, Grand Duo offers a variety of shops. Eddie Bauer is just one of the western brand stores available. The sixth floor consists of many different restaurants including Italian, Indian, a cybercafe, and several Japanese restaurants. The seventh floor is considered a local Chinatown with many Chinese restaurants. The eighth floor offers many beauty care shops, including two hair salons, an herbal shop, and a hair supply shop.

Shannon Edwards, from Yokosan 1/2000

Takashimaya Department Store

Located on the second floor of this emporium is a small Disney store where things to purchase include stuffed animals, kitchen items, baby goods, key chains, etc. While here, ride the escalators to all the floors. There are specialty sections including items by Ralph Lauren, Mikimoto pearls, and famous French designers. Also found are hats, stationery, stereo equipment, clocks, wedding dresses, kimonos, optical goods, and home furnishings as well as a food court on the top two floors.

Open 10am-6:30pm, Takashimaya is next to Cinema City.

DIRECTIONS: From the Fussa Station, ride the train seven stops to Tachikawa. Exit north, then down the stairs on the left. Cross the street and walk directly away from the station. Go down the alley next to Klimt Coffee Shop (pink awnings). Continue on straight and when you see the Inoue Building, continue past it to the large road. Takashimaya will be across the street in front of you on the left. See map on opposite page.

Karen Ozment



Topos

There are Topos Outlets in both Tachikawa and Hamura. This is a chain of discount stores where you bring your own bags to save more. In the basements, there are supermarkets and burger bars. Resembling a vertical K-Mart, the merchandise includes chinaware, rugs, clothing, toys, sporting and electrical equipment. There is also an arcade floor.

DIRECTIONS: An easy way to Topos is to take the train to Tachikawa station and take the north exit out the street below. Walk down the main street away from the station to the next big intersection. Turn right onto Midorikawa Dori by the large fountain. Topos is just past the McDonald's on the left hand side.

Lumine Department Store

Lumine is a collection of boutiques and restaurants. It's a store for window shoppers arranged in standard Japanese department-store fashion, with a basement supermarket. The first floor has a large gift food area. On the upper levels are two floors of variously-priced restaurants. Besides food, there's an art supply area, a florist, many clothing sections, an art gallery, electronics, books, toys and specialty items for gifts.

DIRECTIONS: From Fussa Station, take the Ome Line to Tachikawa. Turn right as you exit Tachikawa's train ticket gates and you'll see Lumine from inside Tachikawa Station.

Rachel Keyser-McClendon

Kichijoji

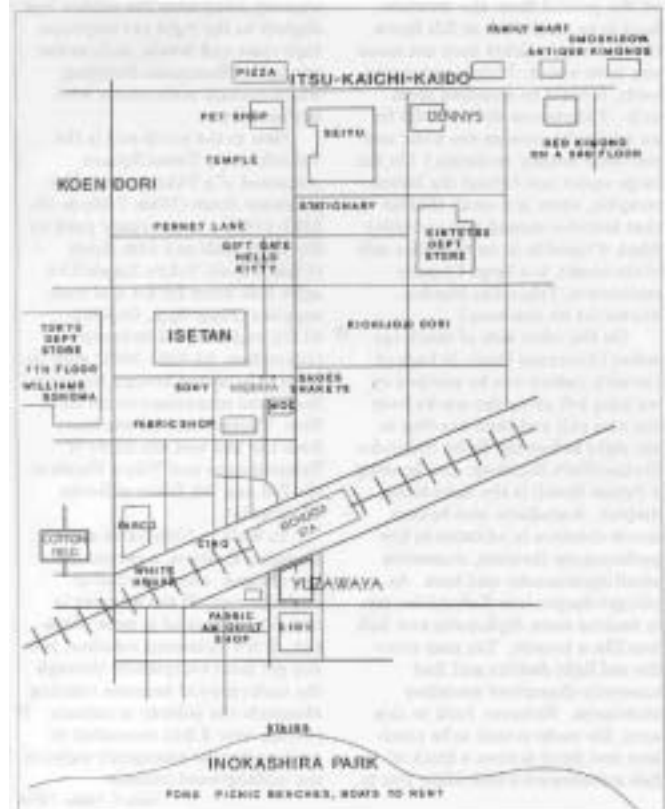
Getting to Kichijoji involves a 40 minute train ride on the Chuo Line. At Tachikawa, transfer to a Tokyo-bound train and get off at Kichijoji. Note that the special rapid trains don't stop in Kichijoji, so if you get on one, get off at Mitaka and take the next train. Kichijoji station has two major exits. The Central Exit is dominated by Sun Road, and the Park Exit by Inokashira Park.

Exiting through the Central Exit you will see the covered arcade called Sun Road. This two-block long arcade and the streets running perpendicular to it are crammed with numerous shops. Isetan, Tokyu, and Parco department stores are here. Also notable is the Miuraya, a supermarket specializing in imported food. Beyond the Citibank past Isetan is Moti Indian Restaurant (also opposite a game arcade). Continue down Sun Road until it dead ends into Itsu Kaichi Kaido. Cross the street and turn right. Walk past Denny's (this is Kichijoji Dori) and Fuji Furniture. In a few minutes you will come upon the first of two Omoshiro-ya. Omoshiro-ya sells used kimonos, obi, and fabric. This store has the cheaper selection of kimonos and indigo fabric. The second store is across the street. As you step out the door look up and slightly to the right. You will see a window with a red kimono in it. This store sells an incredible variety of Japanese clothing. It is more expensive than the first store, but still cheap. After exploring the covered arcade, make your way back to the station. Inside the station you will find a department store with a selection of ready to eat food on the first floor. Walk through

the station to the side opposite side the one that you entered. Look for the "0101" sign and the park exit.

If you are coming directly from the station, exit through the Park Exit and walk past the familiar glittering pachinko shops. In less than a minute you will come upon Inokashira-Dori, dominated by the department store Marui. The sign for Marui looks like 0101. (The word maru means circle.) There's also a Body Shop, Subway Sandwiches, and L.L. Bean. Continuing on, you will come upon the park. Inokashira Park is great for cherry blossom viewing and strolling. It is especially popular with young lovers who walk hand-in-hand along the picturesque lake. Across from the lake, you will find a small zoo, an aviary and an aquarium. Ample picnic tables and benches are located near the zoo and around the lake. Break out the lunch and enjoy the scenery!

Cheryl McNabb, Karen Ozment
Updated 2002 by Cindy Smith



Map Courtesy of Cheryl McNabb



Hachioji

Hachioji is just 230 yen (one way) and 24 minutes (or four stops) from Higashi-Fussa station. At Hachioji Station, get off the train and proceed up the steps towards the exit and turn right out of the train station. Here is the department store SOGO. Go downstairs or use the escalator, turn left and straight ahead is the department store OIOI (MARUI) with a big sign on it saying "VIRGIN CD" which is located in the basement of the department store. Once you enter the store towards your left you will see the "Body Shop" on the first floor.

Tokyu Square is located directly across from the JR Hachioji Train Station and you will see an advertisement on the front of the building of the Disney Store located on the 3rd floor. This is a very nice, "small mall" type in itself. As you enter Tokyu Square, immediately on your left is "Crabtree &

Evelyn - Body Shop" (personal products shop). Proceed up the escalator and on the second floor is "Nature Trail" (clothing), and on the third floor two stores away from the Disney Store is "Crazy Shirts" from Hawaii (mostly T-shirts, sweatshirts, handkerchiefs, golf kliban kat items; all a bit more expensive than their catalog which you can request and place on-line orders at www.crazyshirts.com).

Directly past Tokyu Square or behind it, you will find Tower Records on the 5th floor, (they just had a grand re-opening in March 1999). CDs range from 1800 yen to 2300 yen with the latest single CDs available ranging 600-1000 yen.

Right across from Nagasakiya is "Subway Sandwiches," open 10-10. Several shops down is Mister Donuts open 7am-10pm. McDonald's is also in Hachioji.

Kathleen A. Vactor - reprinted from the Yokosan

Shopping to the South-East of Base

via Hachioji Bypass as if towards Yokosuka

La Fete Tama Mall - Minami Osawa

For a really nice outing to a mall about 40 minutes away, you have to get yourself out to La Fete Tama Mall in Minami-Osawa. You can go to the Outback Steakhouse, Wendy's, Starbuck's Coffee, or a number of outlet stores. There is also a really nice movie theater there as well. There is a rather large department store adjacent to the parking garage, which closes at 11pm. The directions are pretty simple and easy to follow:

Directions: Set your odometer to zero. Go out the Fussa Gate and turn left onto Rt. 16. Follow the signs for Hachioji and Rt. 16. You will see a sign for Hachioji/Rt. 16 at 3.2 km that tells you to turn left. (If you go straight you will be on Rt. 29 and headed toward Haijima.) Turn left for Rt. 16/Hachioji. At 4.7 km on your odometer, turn right for the Hachioji Bypass. You will pass the big round bathhouse on your left and continue on the bridge over the river. At 7.4 km, turn left at the Coco's Restaurant to continue on the Hachioji Bypass. Keep following the Hachioji Bypass signs.

At 15.7 km, at the toll booth, try to get in the left lane. (It is going to cost 250 yen at the toll booth). Right after the toll booth, turn onto the left exit ramp, and take another left off of the ramp. At the JOMO (17 km) take another left. At 19.6 km, you will be at the Daidabirabashi intersection and will see a blue Minami-Osawa train station sign. Take a right. You will pass the Tokyo Metropolitan University on your left. La Fete Tama mall will be past the University on your left. After the mall, you will see a parking garage on your left. Enter the parking garage and park where you can find a space. Parking cost us about 500 Yen for about the time it took us to park, find the Outback Steakhouse, wait an hour, eat, and get back to the car!

To get to the stores, you will go through the Isetan store that is connected to the parking garage. Once on the other side

of the store, you will see a walkway that will lead you to all of the other outdoor stores and the movie theater on your right. If you keep walking through the walkway over the street below, you will eventually reach the outdoor outlet stores on the other side of the street. The Outback Steakhouse is with the other food stores and the movie theater on the right. You will see a sign for it near the stairs that lead to the Starbuck's Coffee Store.

Michelle Arostegui 4/02

5-Story 100 Yen-Machida

The Five-Story 100 Yen Store in Machida is next to the train station. You can take the train using the directions at the Yujo, or you can elect to drive. Driving time on a weekday morning is about 1 to 1 1/2 hours, if there is not too much traffic and will cost you 250 yen in tolls each way. To Machida by train will take you about 1 hour and 20 minutes and will cost approximately 800 yen, each way. If you are going to take the train, it would be a good idea to get the train map at the Yujo Community Center before you venture out.

We followed the basic driving directions to Yokohama, using the Hachioji Bypass and staying on Highway 16. The exit for Machida from highway 16 is AFTER the turn for China Pete's, and after the Toys R Us on the left hand side. Stay on 16 until you see a Machida - 51 exit. Do not go straight and up on the bridge continuing towards Grandberry Mall and Yokohama. Take Machida-51 exit and turn left at the first street. Continue straight on 51 until you get to a fork in the road. Stay towards the left. Continue 1/2 block and straight ahead there is a parking garage. Enter here and park your car. The mall entrance is on the fourth floor, so if you park on another floor, take the elevator to the fourth floor. You will exit the elevator and cross a covered pedestrian bridge that goes over the railroad tracks. Go right once at the outdoor mall level and head towards a large silver arch. On your right there is a small food court (McDonald's, KFC, and some Japanese restaurants) with a water fountain.



To the left, you will see a sign indicating a store with five floors (1F, 2F, 3F, etc). There is not an external sign that says 100 Yen Plaza. This is it!!! Once inside there are 100 Yen Plaza signs. There are dishes on the first floor, garden supplies, baskets, silk flowers, party supplies, office supplies and lots more. There is also a Tokyu Hands craft store in the outdoor mall area. Happy Shopping!!!

Ann Quattrone.Reprinted from the Yokosan.

China Pete's

China Pete's is a favorite stop for shopping all over the Kanto Plain. There are two showrooms located just one block apart and stocked with an abundance of dinnerware, serving pieces, and specialty sets. Seasonal products are stocked best about two months before the holiday itself. Many items are stocked regularly, but due to frequent inventory turn-overs it is recommended if you see an item you really want, buy it then, or it may not be there when you go back. They accept Yen, dollars, Visa, and MasterCard; but checks are not accepted. You must bring your ID card or passport to get tax-free price. (Note: they offer a favorable exchange rate.)

DIRECTIONS: Turn left out the Fussa Gate. Stay on Rt. 16, following the signs to the Hachioji Bypass. Watch the signs because the road turns a few times on the way to the Bypass. Take the Hachioji Bypass and pay the ¥250 toll. Follow the toll road until it merges with Rt. 16 again. When you see the 3M building, you'll be going left towards Yokohama. Continuing on Rt. 16, you'll pass several familiar places like McDonald's. Keep going until you come to a Nissan used car shop on the right and a walkover. On the other side of the walkover is the Nissan Prince dealership. Turn right at that intersection which has a stoplight. Drive two blocks, then there is a school on the right. You will see the China Pete's two-story building on the left, before the traffic signal. There are only six parking places here, so if they are full, turn left at the signal light and park on the street. The other showroom is one block down from the two-story building. There is no parking at this shop.

It takes about one hour and 15 minutes from Yokota; however, if you leave early in the morning you can get there in about 45 minutes. Open 9:30am-5:30pm, closed on Sundays and open on holidays. Tel. 0427-53-0564. Check out their website at: www.chinapetes.com

DIRECTIONS TO CAMP ZAMA FROM CHINA PETE'S: Turn left from the main store, going past the annex about 0.5 km until you see a Honda Primo dealer on the left. Turn right at the light, drive 2 km and turn left at the light (restaurant on right corner). Continue straight to the intersection with the Hot Spar convenience store. Turn right and drive straight into Gate 7 (Golf Course Gate) of Camp Zama.

Viki Lynn Paulson Cody, Teresa Negley 12/96
Directions Revised 2/02 - Teresa Negley

Shopping at Camp Zama

Camp Zama in Kanagawa Prefecture is the headquarters for the U.S. Army in Japan. It also houses a Japanese Ground Self Defense unit in addition to being the site of the former Imperial Army Academy (Rikugun Shikan Gakko). If you look

carefully, you can still see remainders of the Imperial Academy. Aside from wooden buildings with tiled roofs and concrete shelters set in the hills, there are stone monuments located throughout Camp Zama dedicated to Academy students. The largest is the Sobudai Monument near Gate 1 and the Chapel.

As for modern times and SOFA shoppers, the Zama Exchange and nearby Four Seasons/Shoppette are AAFES outlets. The Oriental Bazaar (across the street from the Package Store) carries souvenirs and gift items. Around the corner (opposite the pool) is a small furniture store selling silk screens, coffee tables, and tansus. It also has used tea boxes at times. A few doors down is another store selling Chinese furniture.

One well-known business is the ITT travel agency in the Rec Center on the hill opposite the library. With computer connections to its downtown office, agents provide more service in addition to lower prices.

There is a Commissary Annex across from the Post Office with slightly different merchandise from the main Commissary at Sagamihara (the main residential area). To get to the commissary, go out Gate 7 past schools and a fire station, through several lights until you come to a "T." Turn right, then left at the gas station. Drive along the fence and then turn left into the gate. Turn right at the stop sign to get to the Commissary beyond the gas station. The Sagamihara Commissary is closed Mondays and Tuesdays.

For restaurants, diners eat at the Community Club or at the Golf Club around the corner and up the hill from Gate 4. Specialties are the mugs of lemonade and chili-on-rice. There is a Baskin Robbins, Anthony's Pizza and Burger King, all in the AAFES Exchange building.

For nearby off-base shopping, people drive to the discount stores near their local train stations or take the inexpensive Odakyu train line to the department stores at Machida (Tokyu Hands and Odakyu), Sagami-Ono (Isetan), and Hon-Atsugi for window shopping and specialty items.

DIRECTIONS: Take favorite route to Hachioji Bypass (see directions for La Fete Tama Mall if you don't know the way) Go through the intersection and follow Rt. 16 across the Tama River Bridge to the Hachioji Bypass sign, and turn left. Stay on Rt. 16 and the Hachioji Bypass toll plaza (Toll ¥250), until you reach the Rt. 16/Rt 129 intersection. Get into the left-hand lane to make the left-hand angled turn to remain on Rt. 16. Stay on Rt. 16 until you reach Chuochugakko Iriguchi intersection, where you'll see a Yoshinoya Restaurant and the Esso Gas Station on your right. Turn right. (The best landmark for this intersection is the police station microwave tower).

Turn right here and stay on this street for approximately 7-10km until you reach Sagami Dai 5-Chome intersection. Turn right and follow this street straight into Gate 7, by the golf course of Camp Zama. It takes about 1.5 hours by car.

C.L. Edwards / Teresa K. Negley



Grandberry Mall

Grandberry Mall has the space and selection of an American style mall. Many of you may have seen it from the road (right-hand side) on your way to Yokosuka, but if you haven't I recommend taking a shopping trip there. You'll feel like you are on a downtown main street as you stroll down the wide, brick sidewalks to visit 61 different stores and restaurants. You can find such familiar shops, such as OshKosh B-Goshg, Chevignon and Hush Puppies. You'll see some you've never heard of, like Kent & Kiki and Jonny Garage.

Regardless of whether or not you've heard of all the stores, you should be able to find something for every member of the family. Need some athletic shoes? Check out the Asics outlet. Looking for some clothing for your teenagers? There's a Chevignon, a Look!s Outlet and a Wear House. How about some nouveau furniture? Then you must stop at Franc franc.

The Grandberry Mall is quite popular with dog lovers. You'll see plenty of Japanese families walking their dogs along the outside of the stores. There's even a couple of stores for pet lovers. The biggest one is called Dog Cat Joker, and it's located on the other side of the Starbucks.

The prices at the stores are pretty reasonable. A pair of Hush Puppies shoes cost about 3,000 yen on average, and you can find demin shorts and T-shirts at the Outlet-J store for less than 1,000 yen. On the second level at Kent & Kiki's you can find everything from toddlers' clothing and shoes to men's suits.

For something a little off-beat, walk around the corner from the McDonald's to the Lush store. The store's sign said "Fresh Handmade Cosmetics," which may be a bit misleading. There are no cosmetics, but there are massage bars, bath oils and shampoo bars. Lush also sells what it calls "fizzing bath ballistics." Drop one of these baseball-sized balls into your bath and watch it fizzle and dissolve, leaving you with a wonderful smelling and relaxing bath.

If your stomach has been growling for some serious American-style restaurant food, there is an Outback Steakhouse. The prices are about the same as in the States, and the menu is the same. A short walk across the bridge you can also find plenty to eat. There is a Precece food market, which is much like any Japanese grocery store. There is also a Skylark Island food mart. And for your sweet tooth, stop at the Queen Alice Cafe for some ice cream or other sweets.

DIRECTIONS: If you've driven to Yokosuka, you can easily find your way to Granberry Mall. From Yokota, head toward the Chuo Expressway. At the main intersection, just before the Chuo entrance, turn left toward the Hachioji Bypass. Just stay on Route 16 until you see the signs for the Tomei Expressway. Just before the expressway entrance, you'll see the mall on your right-hand side. You can take an exit off to the left, which will snake back under Route 16 and lead you to the mall. The trip can be a long one. It took us more than two hours to get to the mall on a Sunday, but it took only an hour to get back to the base. If you want to go by train, you'll need to get to Minami-Machida Station, which is located on the Den-En Toshi Line.

Pam Amrhein/Dec '01



Shopping at Atsugi Naval Air Facility

Located 25 kilometers east of Yokota Air Base, it's an easy drive to Naval Air Facility Atsugi for a day of shopping or entertainment. The exchange complex has the Navy Exchange, video rentals and personalized services - engraving, watch repair, optical shop, flower shop, and gift wrapping. There is also a Baskin Robbin's ice cream shop, book store and Mini Mart for your convenience. The commissary is to the right of the Exchange complex parking lot. Atsugi's Exchange is not as large as Yokosuka's exchange, however, you can still find a wide variety of items. McDonald's is across the street from the Exchange complex. Across from it and diagonally across from the exchange is the theater (Bldg. 77). Also housed in this building is the uniform shop, audio video store, barber shop, beauty salon, and bowling alley. Ichiban Collectibles is also located in Bldg. 77. They sell an assortment of gift items, jewelry, rugs, and other household ornaments. Ichiban Collectibles is managed by the OSC. They are open every Thursday, 10am-5pm.

The 19th Hole Restaurant at the golf course offers breakfast, lunch and dinner. There is also a soba shop near the Navy Lodge, open only during the winter months to help take away the chill of the season.

Although Atsugi offers many things to do, touring the base isn't your only option. There are restaurants, small shops, and vegetable stands right outside the main gate as well as two beautiful parks, all located near the East and South gates.

DIRECTIONS: Go to Hachioji Bypass using your favorite directions. (see directions for La Fete Tama Mall if you don't know the way). Follow Rt. 16 across the Tama River Bridge to the Hachioji sign, and turn left. Stay on Rt. 16 and

the Hachioji Bypass toll plaza (Toll ¥250), until you reach the Rt. 16/Rt 129 intersection. Get into the left-hand lane to make the left-hand angled turn to remain on Rt. 16. Stay on Rt. 16 for approx. 12-14km until you see the Atsugi/Rt. 246 sign. Turn right onto Rt. 246 and you will be on an entrance ramp to Rt. 246. Stay on Rt. 246 through 3-4 traffic lights and a tunnel. When you come up out of the tunnel, go through the intersection and stay to the left. In about 2-3km, you will see an Autorama Pachinko Parlor on the right at the intersection with a sign that says "Ayase". Turn left at this intersection and follow this street to the end. At the end of this street, you will turn right and then take the very next left. You will now be on the street that takes you directly to the Main Gate of NAF Atsugi. Remain left at the Y shaped split (there is a Kyoseki Gas Station that sits right in the middle of the Y at this intersection). Cross over the Tomei Expressway and in about a kilometer you will be at the main gate.

DIRECTIONS TO ATSUGI FROM ZAMA: Go through Camp Zama's Main Gate. Turn left then right up the hill before the first building (insurance office). Cross the narrow bridge and turn right at the light (next to a school). Pass a civic complex on the left and continue through a Y (by gas station), past a COOP to another Y. Take the left fork, continuing straight, past the McDonald's to the intersection with the Daiei and Esso Gas Station. Turn left, then right at the light to cross over the Tomei highway, then left at the light on the other side of this small bridge (next to the pedestrian bridge). Drive alongside the base fence and then turn right into the main gate of Atsugi.

C. L. Edwards / Paulette Edwards



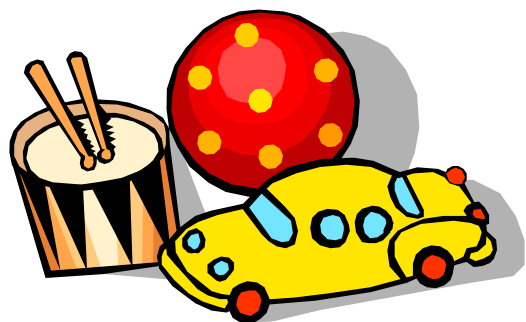
Sagamihara Asamizo Park

For an added treat when you make the trip to Camp Zama or China Pete's, stop by Sagamihara Asamizo Park. This park provides entertainment for kids of all ages. The Park is split by the main entrance road. To the left is a free parking lot. From there, it is a short walk to beautiful flower gardens, a large grassy area for picnicking and a uniquely designed playground. To determine the design, you must take the elevator in the tower for a bird's-eye view of the area. To the right of the main road is the Kanagawa Greenhouse. There are also several beautiful fountains in a canyon of evergreens. To continue on, I recommend a stroller for younger children, as there is a lot of ground to cover. There are several trails through gardens and wooded areas with occasional sculptures, children's castles, and gazebos. Visiting the park can be a quick stop or an all-day affair.

There is also a small zoo including a petting area and pony rides. Tickets for the pony rides are ¥50 in the administration building, to the right of the riding course. The pony ride hours are: May-August 10:00 -11:30am, 1:30-2:30pm, 3.30-4:30pm; September-April, 10-1 1:30am and 1:30-3:30pm.

DIRECTIONS: Follow the directions to China Pete's. At the first traffic light between China Pete's and the school playground, turn left, passing both China Pete's stores, continuing on to two more stop lights. At a Honda dealers, turn RIGHT. Go five more stop lights, passing Aoba-3 Chome and Ichinohara Roads, and turn left at the restaurant. Go five more stop lights to the street sign, Sagamihara Asamizo Park, and turn right into the park.

Beth Holbrook 2/96



Toys R Us

The selection seems endless. Play money and yo-yos, a wall of coloring books and crayons, etc., plus Japanese dolls. There is a variety of games and puzzles. There are computer games and remote controlled trains. Model supplies are well stocked. Toys for babies and toddlers from Fisher Price to Playschool. A real treat was an aisle devoted to Barbie.

The prices are reasonable, only slightly higher than the stateside prices. They are open 365 days a year, 10am-8pm. They also offer a delivery service should you decide to buy large items. You can get assistance in English as there is at least one American manager.

DRIVING DIRECTIONS: Take your favorite route to the Hachioji Bypass. (If you don't know how to get there, please see the directions for Camp Zama.) Turn left at the second light onto the divided Rt. 16 Hachioji Bypass road. After traveling for several kilometers, you will need to get into the right lane which leads directly onto the bypass. This is a toll road. The toll gate is just a short distance and is ¥250. Follow the toll road until it again merges with Rt. 16. When you see the "3M" building, you will be heading to the left towards Yokohama. Continuing on Rt. 16 towards Yokohama, you will notice several familiar restaurants on your right, such as Kentucky Fried Chicken and McDonald's. Just after McDonald's, about five blocks, you will see a Mister Donut on the right. (If you turn right at the Nissan Prince intersection, you will find China Pete's on the left, about one block down.) Next you will see a Denny's Restaurant on the left. After the Denny's, you will see a Victoria Station restaurant and a very large Do-It store on the right. Toys "R" Us is just ahead another .9km on the left just past McDonald's. Turn left into the parking lot. By car, it takes about 1-1.5 hours.

TRAIN DIRECTIONS: Take the Hachiko Line from Higashi Fussa Station. Get on the train going toward Hachioji, the end of the line. At Hachioji, change to the Yokohama Line for Hashimoto and Higashi Kanagawa (you can take a regular or express train). You will get off at Kobuchi Station (seven stops). It takes about 1 hour. Go out the east exit and go right. At the first traffic light, turn left. At the second light turn right and follow the road until you end up at Rt. 16. Turn left and walk until you end up at Toys R Us (about 2 blocks). From the station it is about 6 or 7 blocks and takes about 15 minutes.

Viki Lyn Paulson-Cody

Noritake Factory

The Noritake factory near Atsugi offers visitors a selection of shops. One carries quality seconds in addition to glassware and crystal. The patterns available vary greatly from time to time and include traditional Japanese dinnerware in addition to the more familiar Western tableware. Don't count on finding pieces to match your china, as patterns depend on what the factory is making for the Japanese domestic market. The main shop is a striking display of the best china, glassware, silverware and flatware. There are no seconds here and the prices reflect the quality. Many patterns displayed are not for export. Some prices are reasonable and some are exorbitant; it depends on the piece. They have catalogs and if they don't have it out, they may have it in the back. If they don't have it in stock, they will be happy to order it for you.

The factory is not open for tourists, but groups can visit with prior arrangements. The shops offer great sales several times each year. You can be notified of the sales in advance by postcard if you take the time to self address the cards when you visit the main showroom. Be sure to use your Fussa mailing address.

The shops are open 9:30am-4:30pm seven days a week. They close the third Monday of each month,

February 27-28, the first Sunday and Monday in June, during the week of Obon in August, August 30-31, and for the New Year's holidays. Parking is available at no charge. One



last bit of advice, don't forget to bring your passport because they offer tax free sales to foreigners. They usually only accept a passport for this purpose, not an ID card.

DIRECTIONS: Turn left out the Fussa gate and follow Rt. 16 to the Hachioji bypass. Shortly after the bypass, Rt. 16 and Rt. 129 separate. Turn right and follow Rt. 129 for about 15 kilometers. You will then come to Rt. 246. Watch the road signs and get into the right lane, go under Rt. 246 and immediately turn right onto Rt. 246. Stay on this very busy road only a short time. Get into the right lane and turn right at the first traffic signal (Nissan on right, Toys R Us on left). After turning (Rt. 412 for Aikawa and Tsukui), continue into a "T" intersection. Turn right again and stay on this road for two kilometers until you see the Noritake Factory complex entrance on your right.

To be sure they are open or to check when their next sale is, call them at 0462-41-1632/7102.

Viki Paulson Cody 5/97

Note: a trip to Noritake is easily combined with a detour through Camp Zama on the way home (about 15 minutes away). Back on Rt 246, cross Rt 129 and the river, then take the second exit on the left (Rt 51 to Sagamihara; also to Zama, Machida, then Sobudai). Turn left. At the "Y" above the tunnel, curve left to Central Zama, then turn right into the main gate.

Yokosuka Naval Base

For an enjoyable day of shopping, I recommend a drive to Yokosuka Naval Base. Located south of Yokohama, Yokosuka has an assortment of shops, clubs, and restaurants, as well as submarines, aircraft carriers, and other vessels in the harbor. The Family Service Center (in the blue building behind the hospital) has lots of area maps detailing interesting local activities and attractions. A free bus to Yokota leaves from their Family Service Center, call 243-7777 for times and location pick-up.

You can enjoy one-stop shopping at the main exchange, florist, and commissary. Across the parking lot is a craft store, bookstore, and package store. This complex is centrally located with plenty of parking. The exchange has a wide assortment of carpets, household goods and kitchenware, and clothes.

The A33 Fleet Exchange is located across the base (left from the base front gate), but well worth checking out. On the first floor there's an electronics showroom, records and tapes, computer section, fine china, and sporting goods. Upstairs you'll find silk screens, woodblock prints, vases, and all types of souvenirs. They've thought of everything-there's a pack-and-wrap service, US Post Office window, and check-cashing window right in the Fleet Exchange! If you're seeking Japanese cuisine or merchandise, there's a large and lovely mall on Route 16 just outside the base.

DIRECTIONS: Turn left out the Fussa Gate. At 7.5km, you'll see a sign for the Hachioji Bypass. Take the bypass, and pay Y120 at the toll gate. At 20km, you'll come to an intersection with signs for Routes 16 and 129. Get in the left lane and make an angled left to stay on Rt. 16. Continue on Rt. 16, which will run directly into the Hodogaya Bypass and the Yokosuka-Yokohama Toll Road. At 50km, you'll reach the tollgate of this tollroad. You'll have to decide which exit to get off, Exit 6 (Zushi) or Exit 7 (Yokosuka). Exit 7 usually has less traffic, but costs Y300 more.

When getting off the tollroad at Exit 6 (Zushi), pay Y800. After the tollgate, the road will divide. Go right following the sign to Yokosuka. You'll come to a "T" intersection where you'll turn right. At the next "T" intersection with the Rt. 16 sign, turn right onto Rt. 16. You'll go through a series of tunnels and into Yokosuka City. At 75km, Yokosuka's main gate will be on your right.

If you get off the toll road at Exit 7 (Yokosuka), pay Y900 at the tollgate. After the tollgate, turn left and stay in the left lane. Pay Y200 at the next tollgate. Then follow the main road and soon you'll see Tokyo Bay on your left. Drive approximately 1km and you'll come to Yokosuka's main gate.

DIRECTIONS HOME: Retrace your steps or follow the Hachioji signs until you reach the Hachioji Bypass, then follow the Kawagoe signs back to Yokota.

Sally Mayberry

The trip to Yokosuka Naval Base from Yokota Air Base will be: approximately 75 kilometers, and will take 2-3 hours. The tolls will cost between 1,050 and 1,350 yen one-way.

The phone number at Yokosuka Naval Base is: 0468-21-1911.



Shopping More Than an Hour From Yokota

Kawagoe RISM Outlet Mall & Eddie Bauer Outlet

This is a collection of shops in a modern setting. On the second level there's an Eddie Bauer outlet (tel. 049-2693384) and an outdoors/sports shop with goods by Patagonia, Columbia, and Coleman in addition to an Italian diner (Materio; 10% off coupons at Eddie Bauer's) and carpet shop at the opposite end. At the same end, there is a Hoya crystal outlet with some prices lower than the factory (the prices in red are for 'members', which costs nothing to join). There is also a shoe store with Cole Haan, Dr. Maartens, and other brands, a large drugstore, a shop selling kitchen goods alongside lingerie, and several clothing shops. If you've got kids, there's an arcade of snack shops and game machines on the first level. The mall is open 10:30am-7:30pm; closed on the third Wednesday of the month (0492-69-3939).

DIRECTIONS: Turn right out the Terminal Gate onto Rt. 16, heading for Kawagoe via the underpass. Rt. 16 will narrow from four lanes to two lanes and widen again. As you enter Kawagoe, the Rt. 16 signs will change to show

Kasukabe and Omiya (at about 20km, stay on Rt. 16 in the right lane). You'll pass a blue sign for The Old Spaghetti Factory on the right. Stay in the right lane as Rt. 16 takes a sharp right turn (at 23.4 km). As the road curves to the left, you'll see 3 large blue signs (Kawagoe Station, Higashi-Matsuyama, and Tokyo). Stay in the right lane and turn right onto Rt. 254 for Tokyo, and later Ikebukuro. The road will cross Rt. 56 with a Royal Host on the right. Stay on Rt. 254, going straight. At about 30km, there will be an Esso station on the right and a Toyota auto dealer on the left. Turn left at the light where Jonathan's Restaurant and Men's Plaza Aoki are on the far left corner. You'll pass a park on the right. Turn right at the second light (there's a fixe station on the left, and a Mos Burger opposite it on the far left - look for the "M" sign).

Follow the "P" (for parking) signs around the mall to the left into an underground garage. Push the green button on the machine to get a parking ticket. The first two hours are free, then it's Y100/half hour. For the return, back track via Rts 254 and 16 toward Hachioji. Stay in the left lane as you approach Rt. 16. The drive is 1-1.5 hours, 32km away.

Chieko Brumley, Wendy Matheny, Teresa Negley 10/96

Shopping Terms

ENGLISH

Where is [store name]?
desuka?

Do you sell [item]?

I'd like to see this.

Do you have any others?
Do you have a smaller one?

arimasuka?

How much is it?

Do you accept credit cards?
tsukaemasuka?

JAPANESE

[Store name] wa doko

[Item] wa arimasuka?

Kore o misete kudasai.

Hoka ni arimasuka?

Motto chiisai no wa
Ikura desuka?

Kurejitto kaado o

